

Figure S1. Endophytic fungal strains from Rubber tree *Ficus elastica* Leaves on PDA medium.

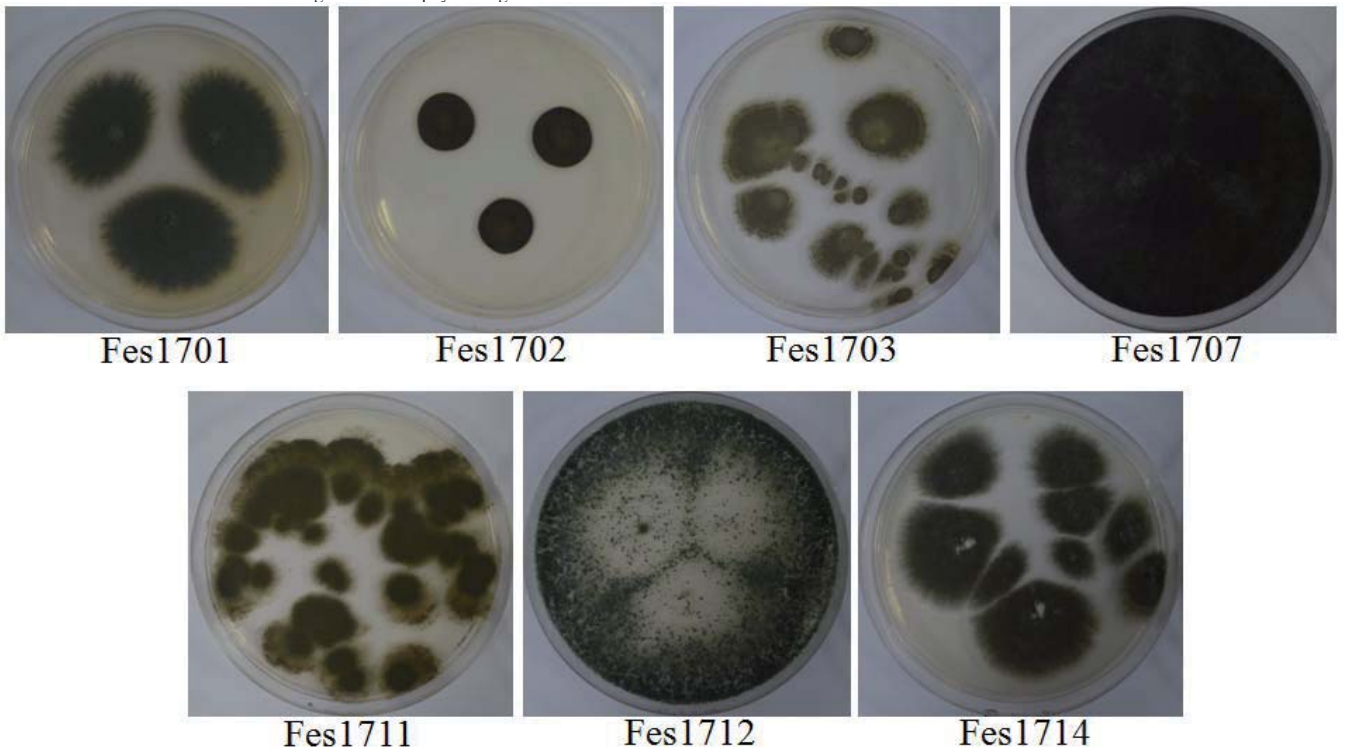


Figure S2. HRESI-MS spectrum of compound 1.

181128-52-1 #19 RT: 0.11 AV: 1 NL: 9.11E9
T: FTMS +pESI Full ms [100.0000-1500.0000]

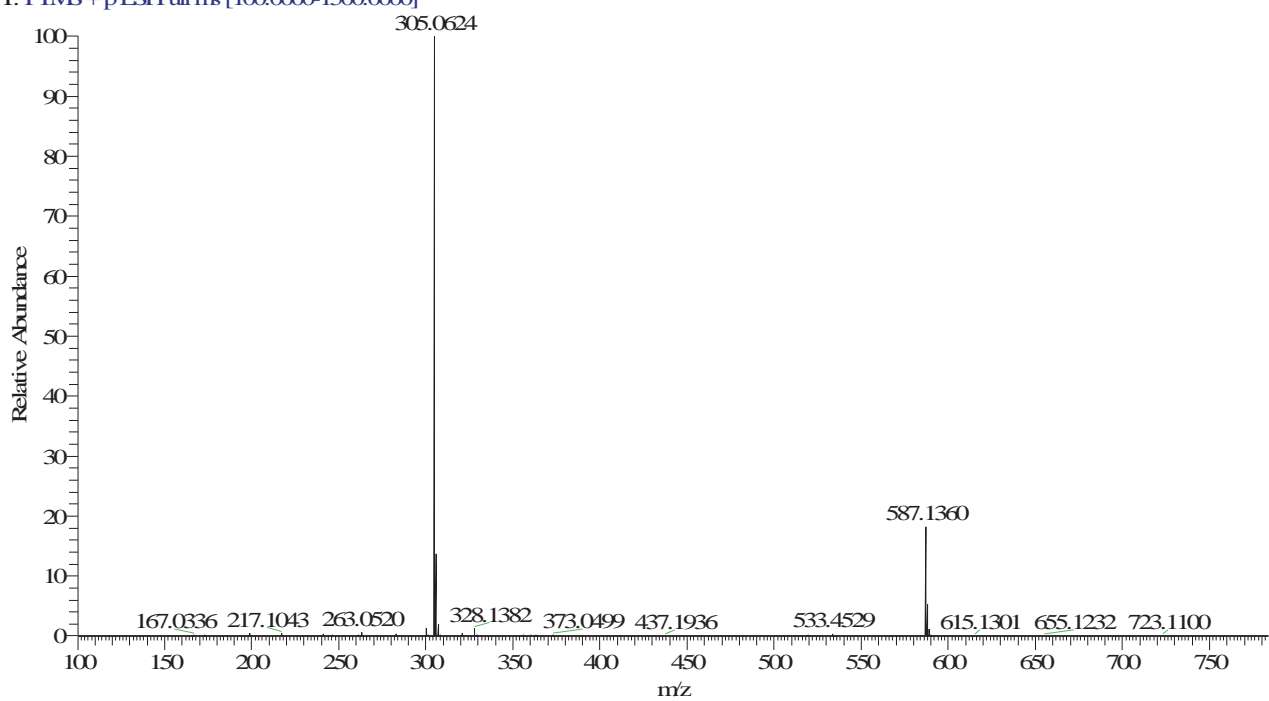
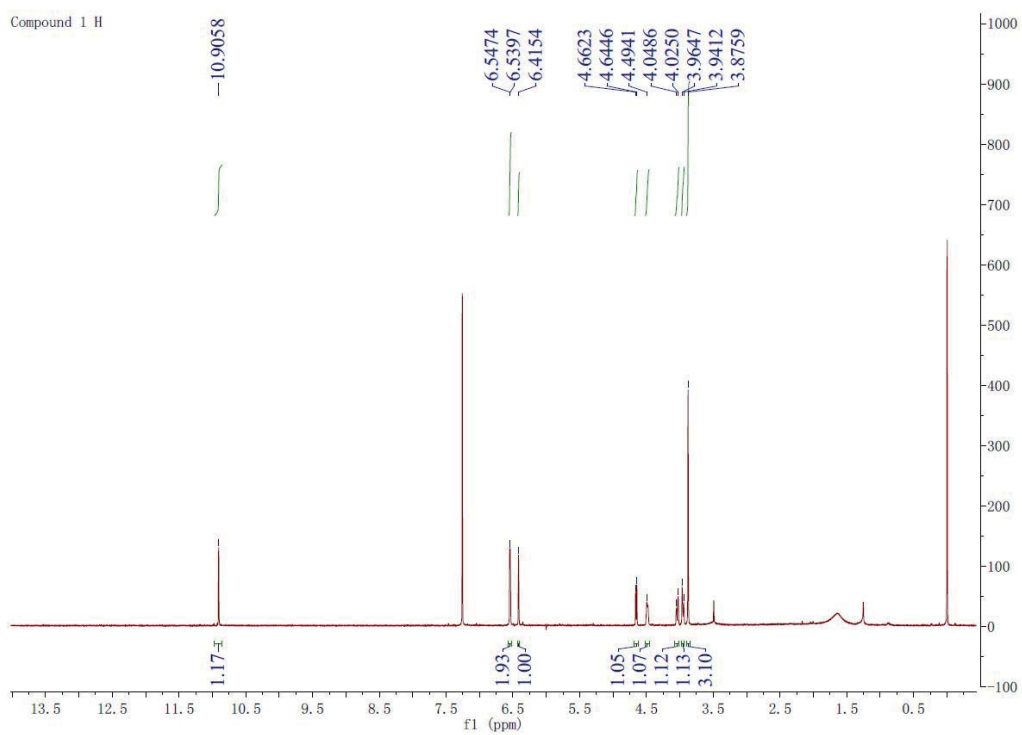


Figure S3. $^1\text{H-NMR}$ spectrum of compound **1** ($\text{CH}_2\text{Cl-d}_3$).



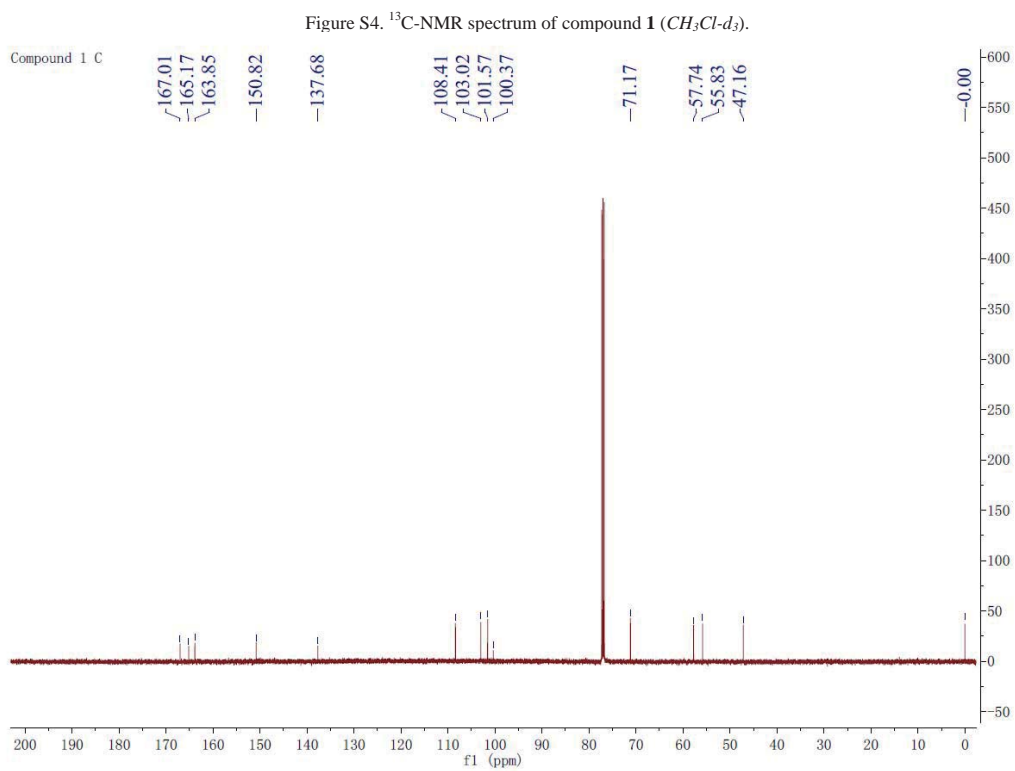


Figure S5. ^{13}C DEPT spectrum of compound **1** ($\text{CH}_3\text{Cl}-d_3$).

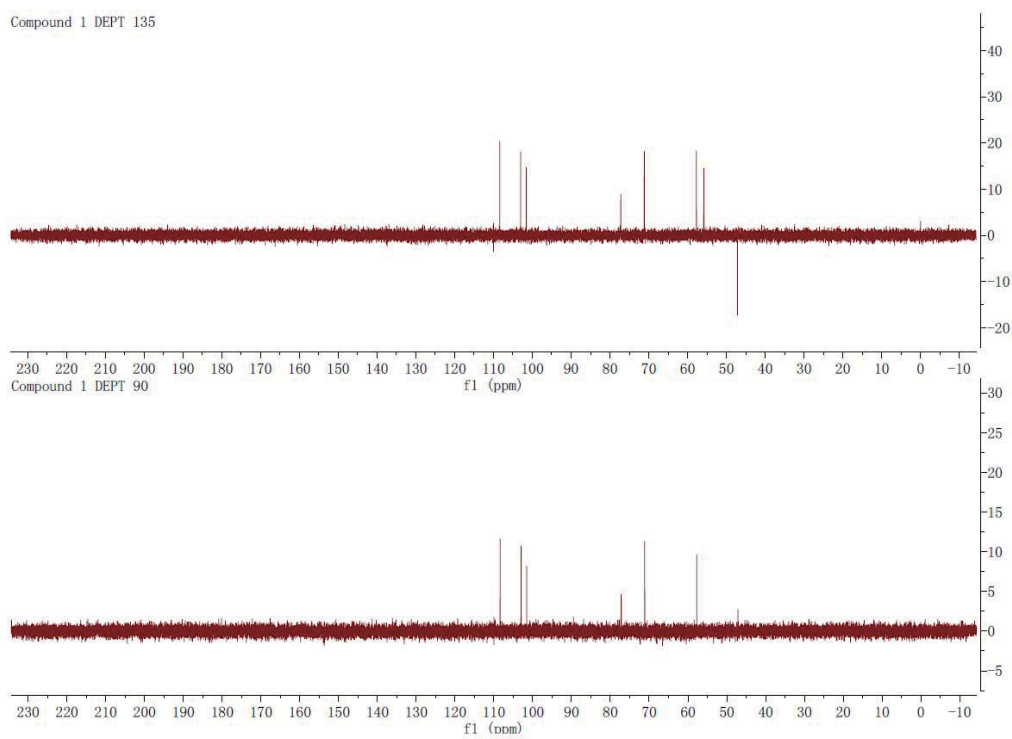


Figure S6. HMQC spectrum of compound **1** (CH_2Cl-d_3).

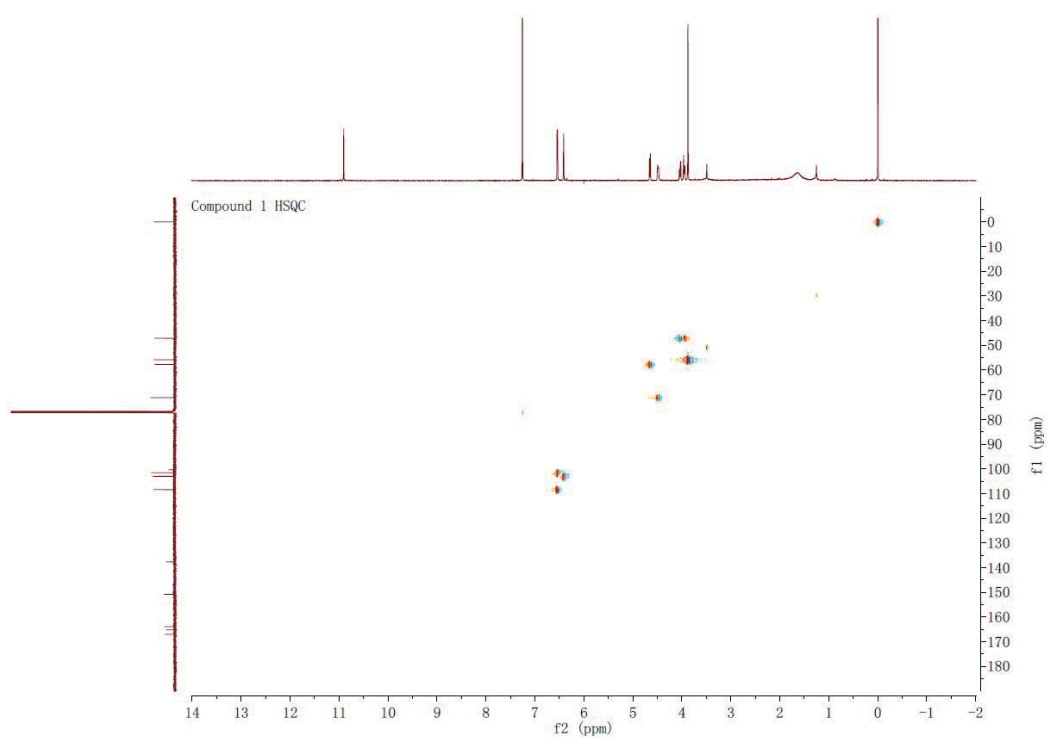


Figure S7. COSY spectrum of compound 1 (CH_3Cl-d_3).

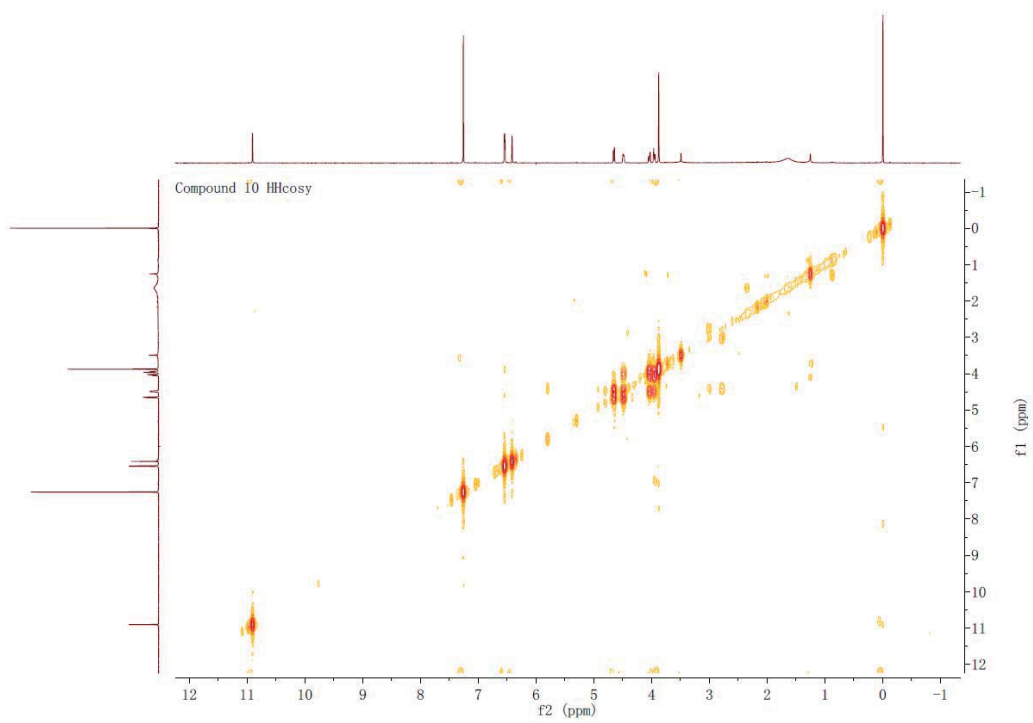


Figure S8. HMBC spectrum of compound **1** (CH_2Cl-d_3).

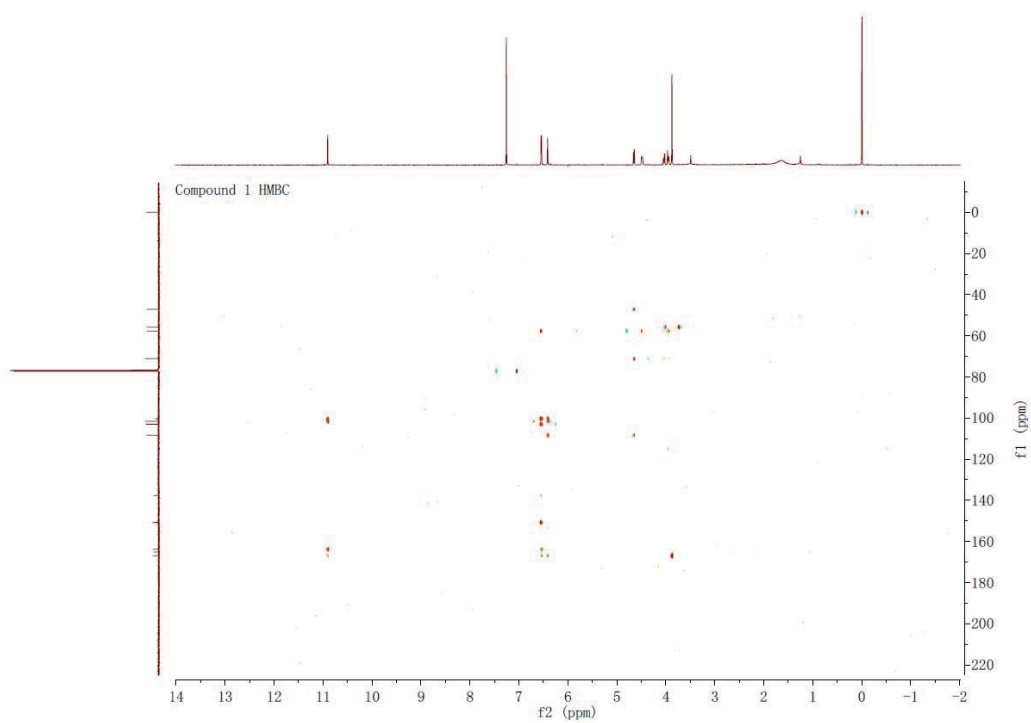


Figure S9. HRESI-MS spectrum of compound 2.

181128-52-2 #17 RT: 0.10 AV: 1 NL: 7.81E9

T: FTMS + p ESI Full ms [100.0000-1500.0000]

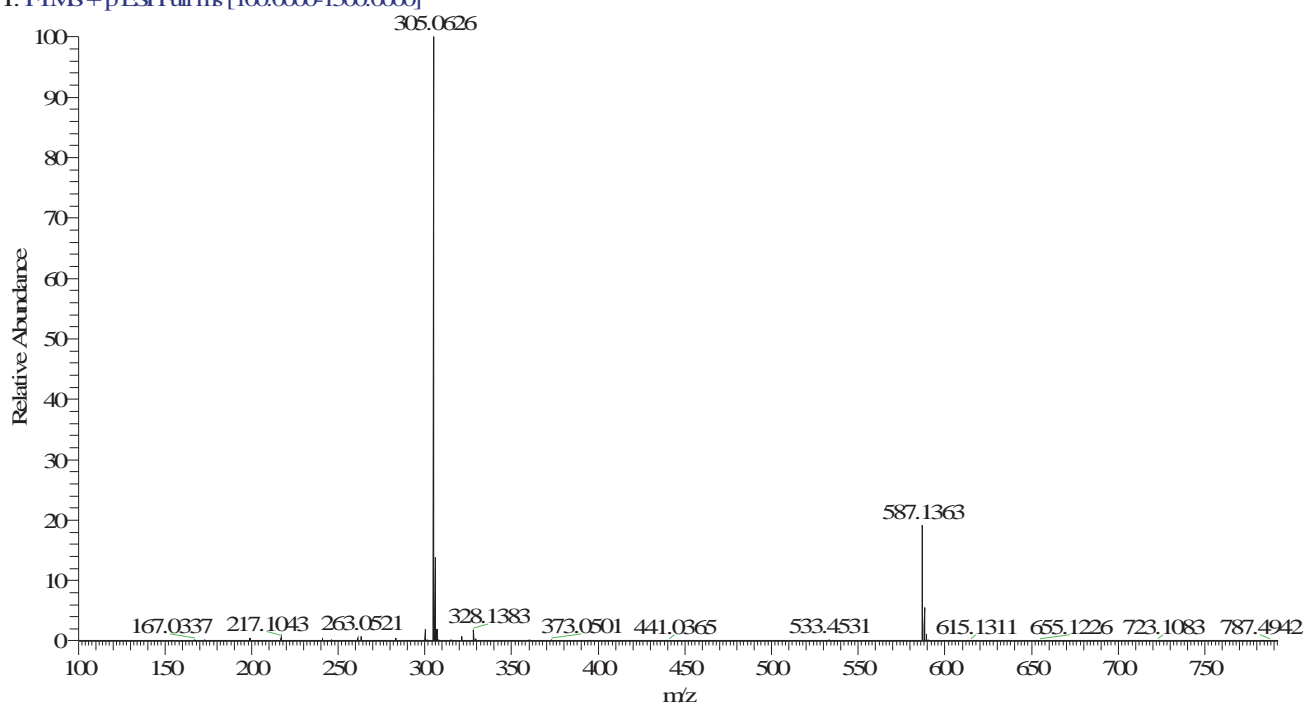
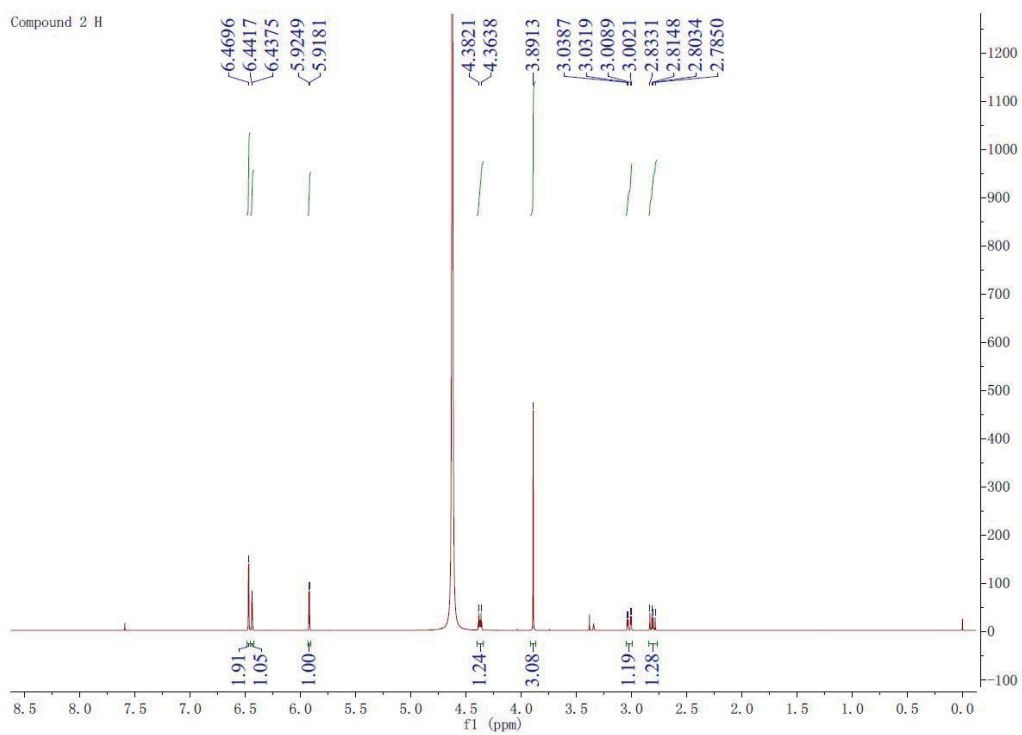


Figure S10. $^1\text{H-NMR}$ spectrum of compound **2** ($\text{CH}_3\text{Cl-}d_3$).



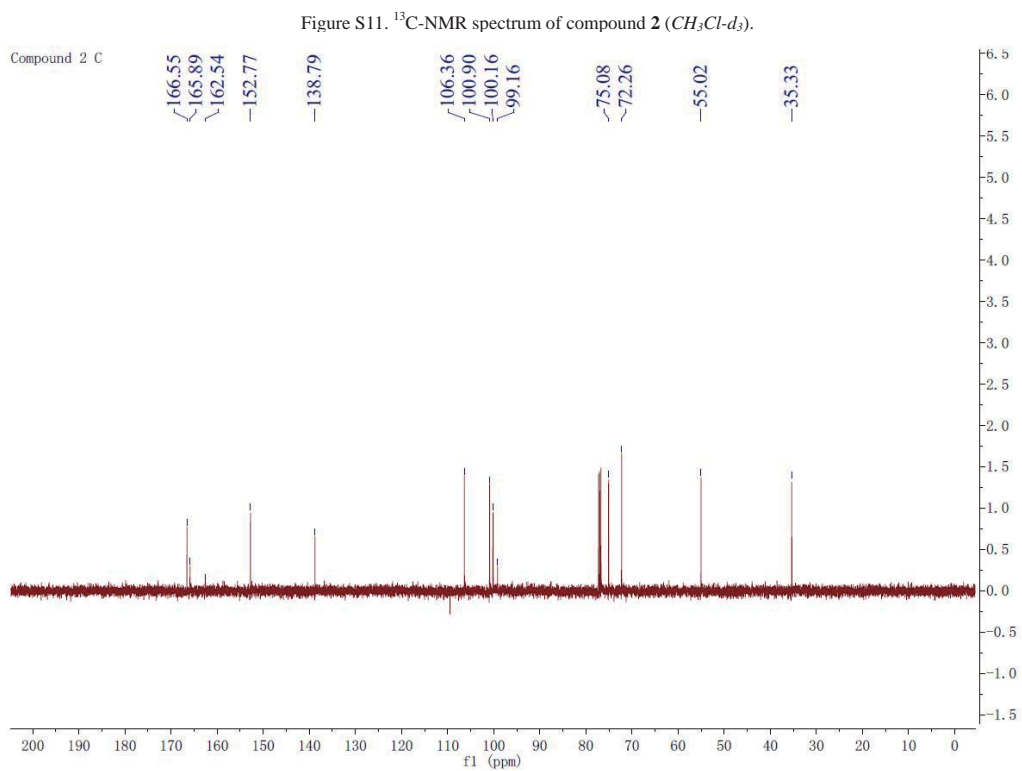


Figure S12. ^{13}C DEPT spectrum of compound **2** ($\text{CH}_2\text{Cl-d}_3$).

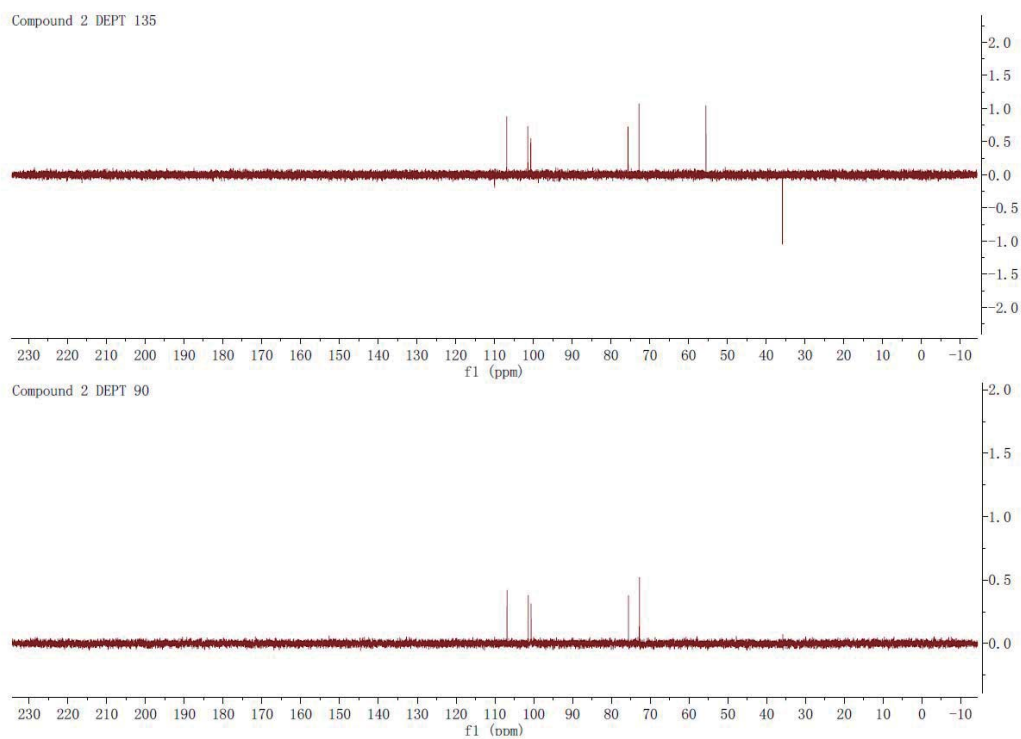


Figure S13. HMQC spectrum of compound 2 (CH_3Cl-d_3).

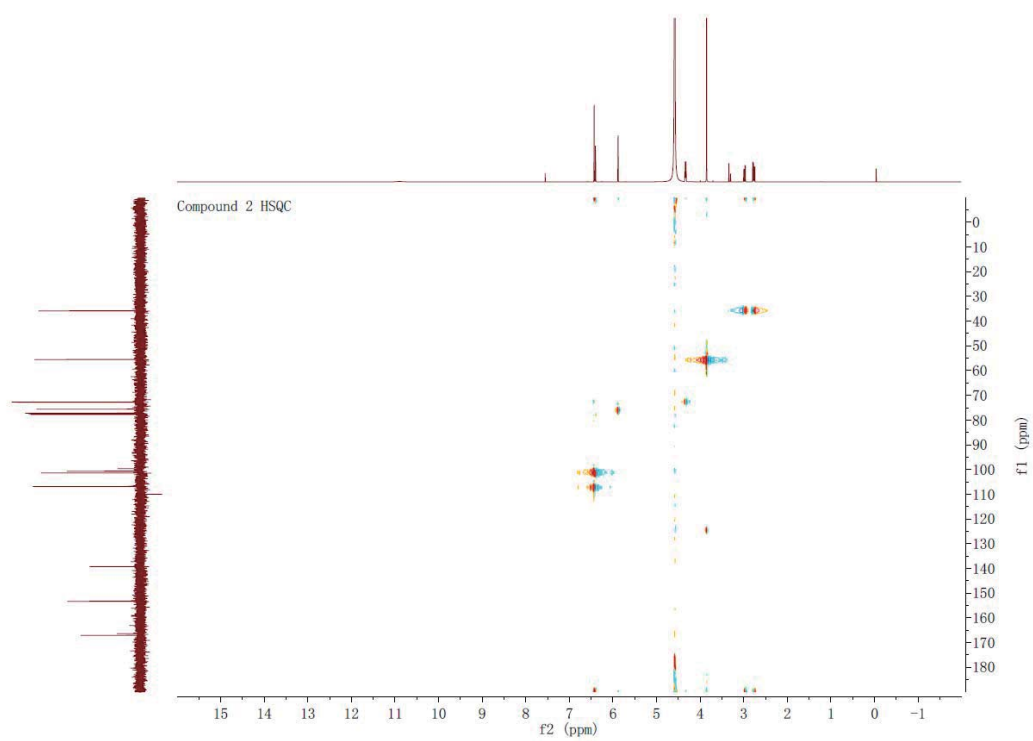


Figure S14. COSY spectrum of compound 2 (CH_2Cl-d_3).

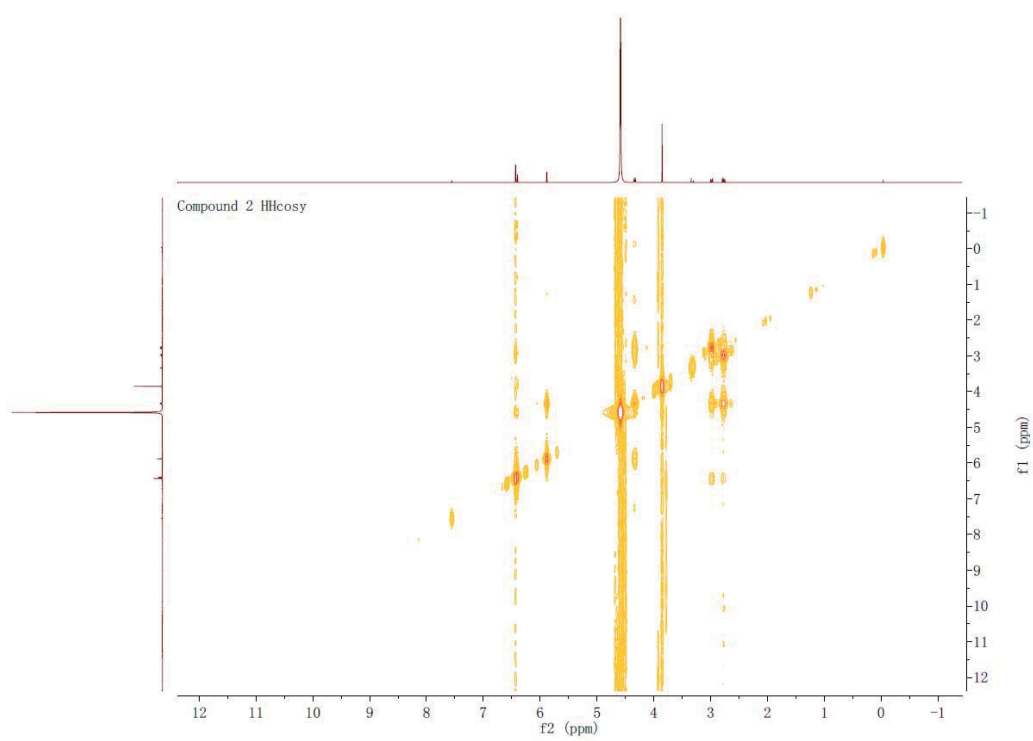
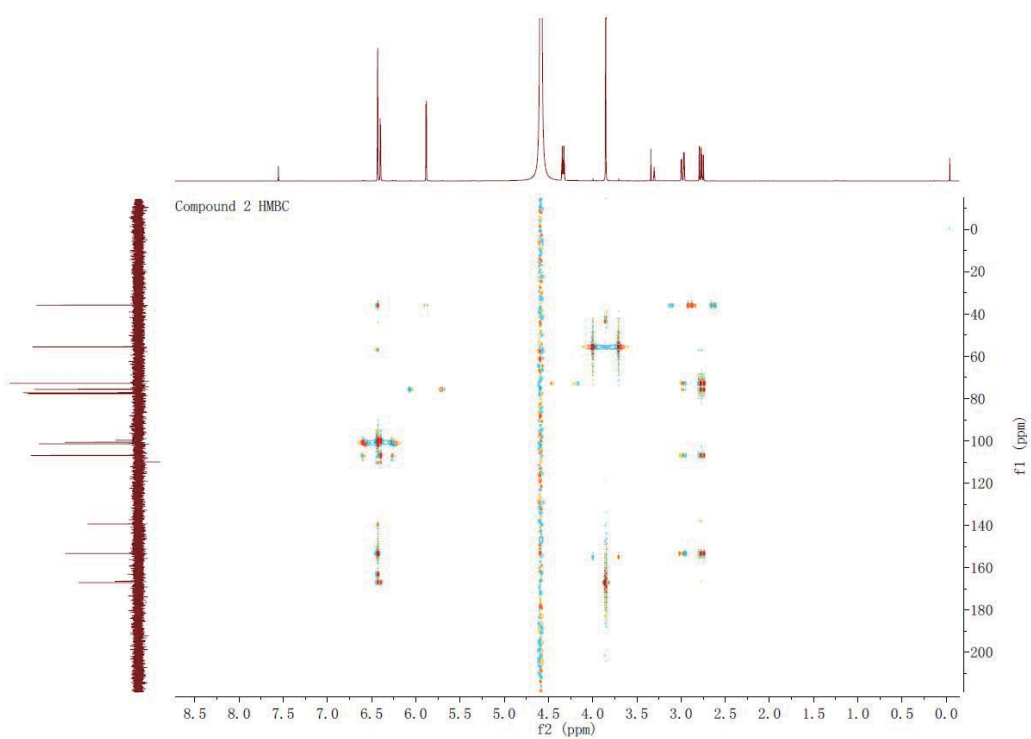


Figure S15. HMBC spectrum of compound **2** (CH_3Cl-d_3).



Compound 3 H

Figure S16. $^1\text{H-NMR}$ spectrum of compound 3 ($\text{CH}_3\text{Cl-d}_3$).

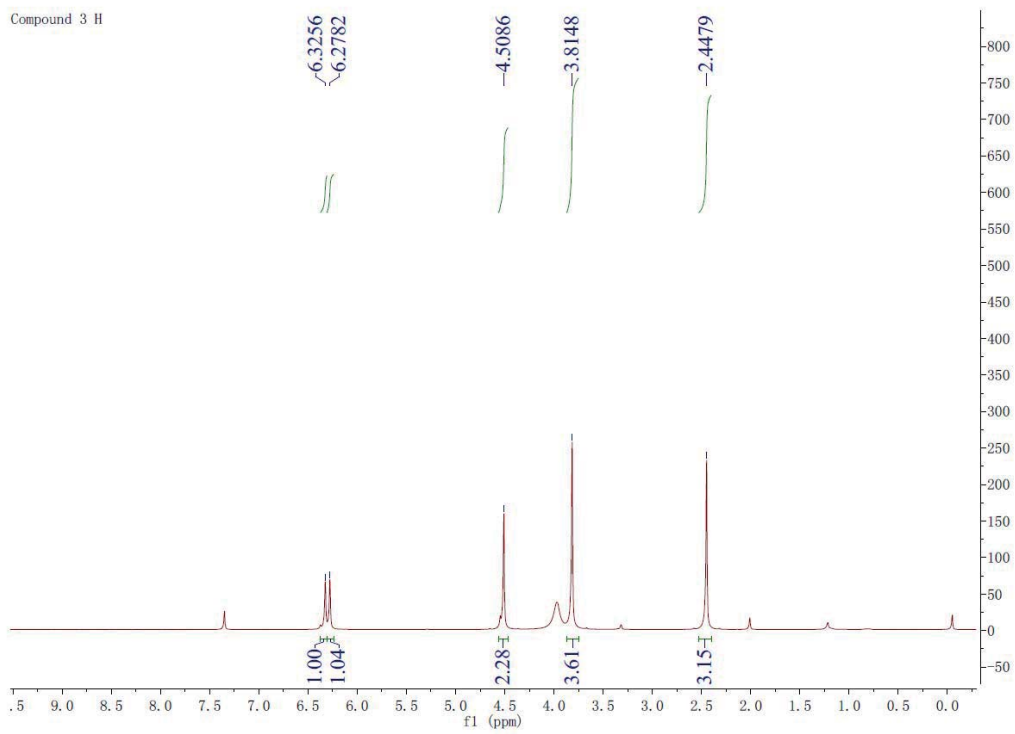


Figure S17. ^{13}C -NMR spectrum of compound **3** ($\text{CH}_3\text{Cl-}d_3$).

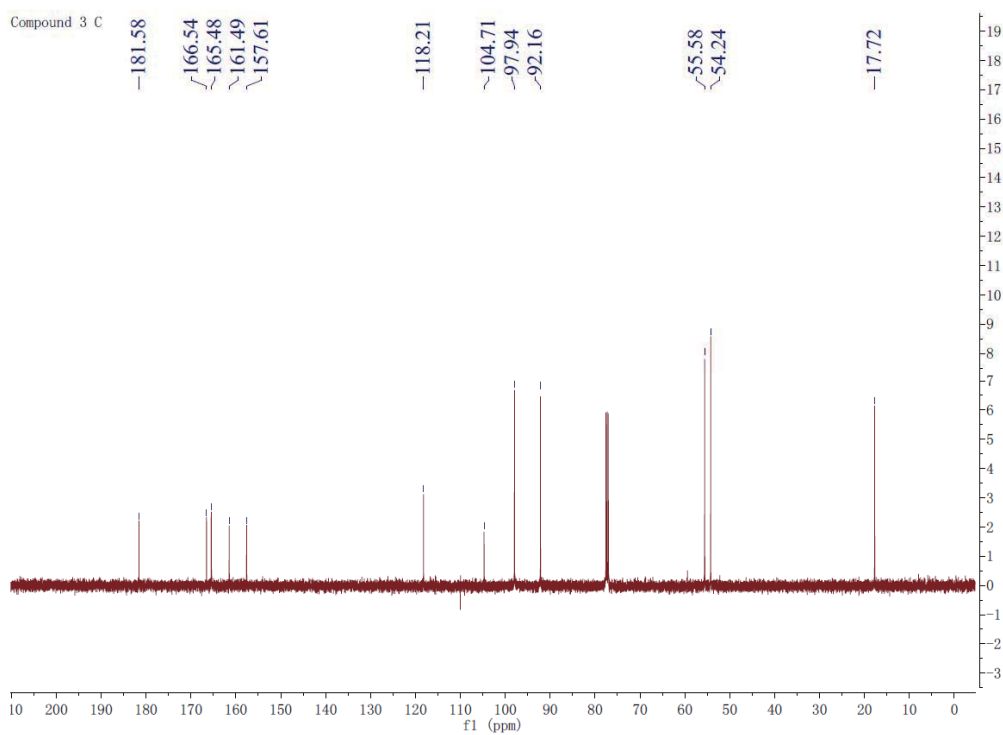


Figure S18. $^1\text{H-NMR}$ spectrum of compound **4** ($\text{CH}_3\text{Cl-d}_3$).

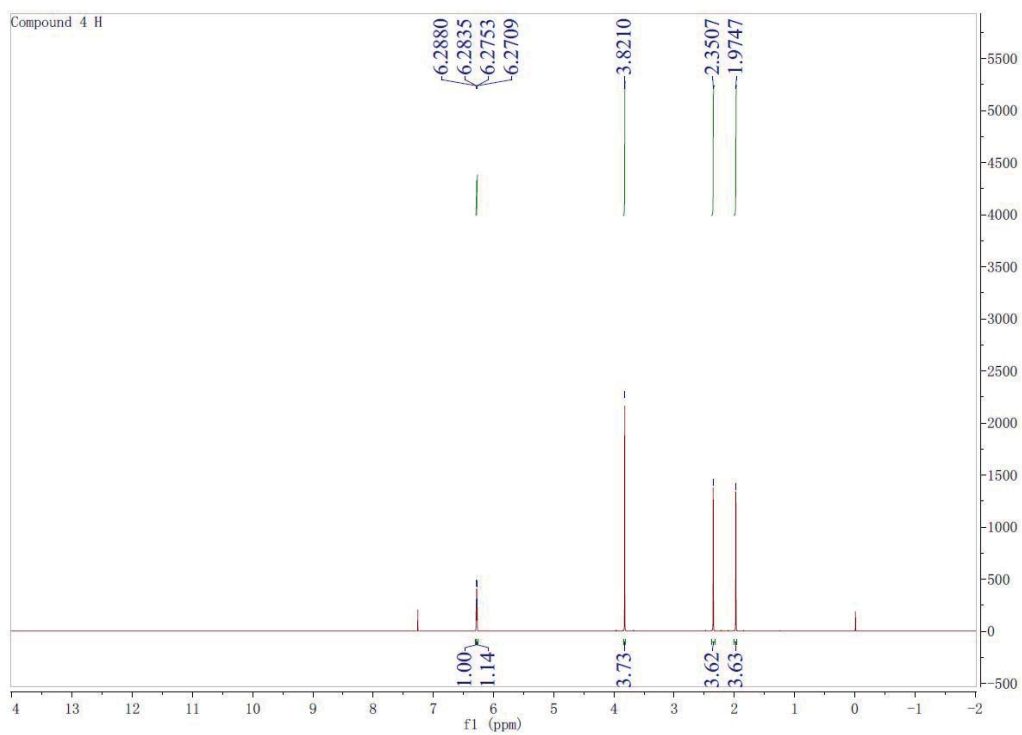


Figure S19. ^{13}C -NMR spectrum of compound **4** ($\text{CH}_3\text{Cl-}d_3$).

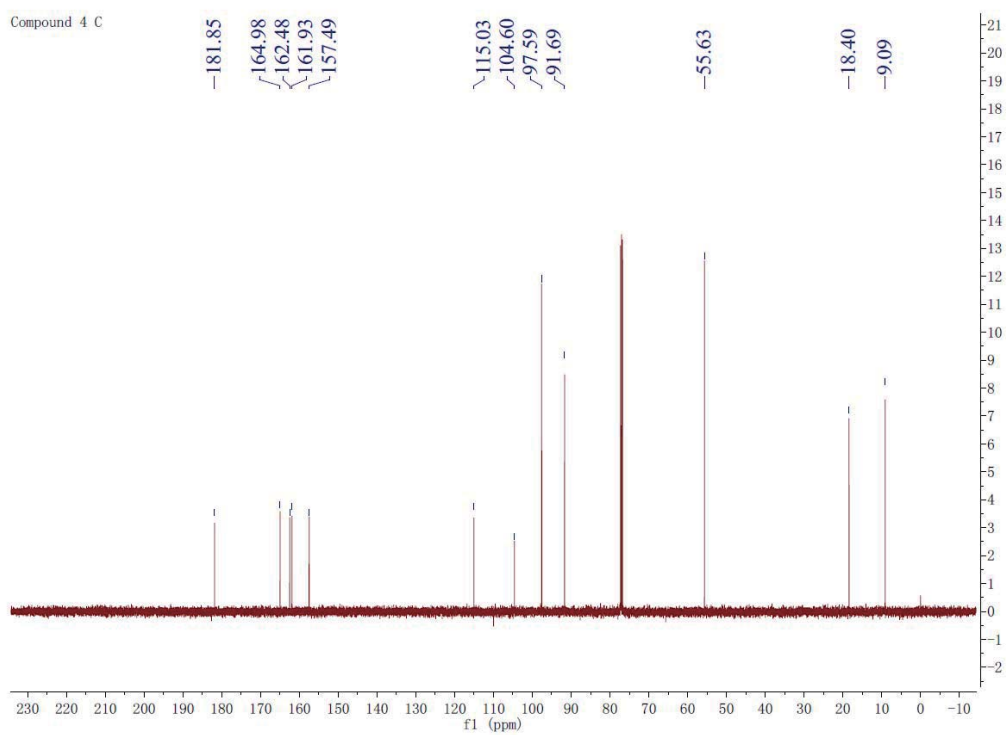


Figure S20. ¹H-NMR spectrum of compound **5** (CH₃Cl-d₃).

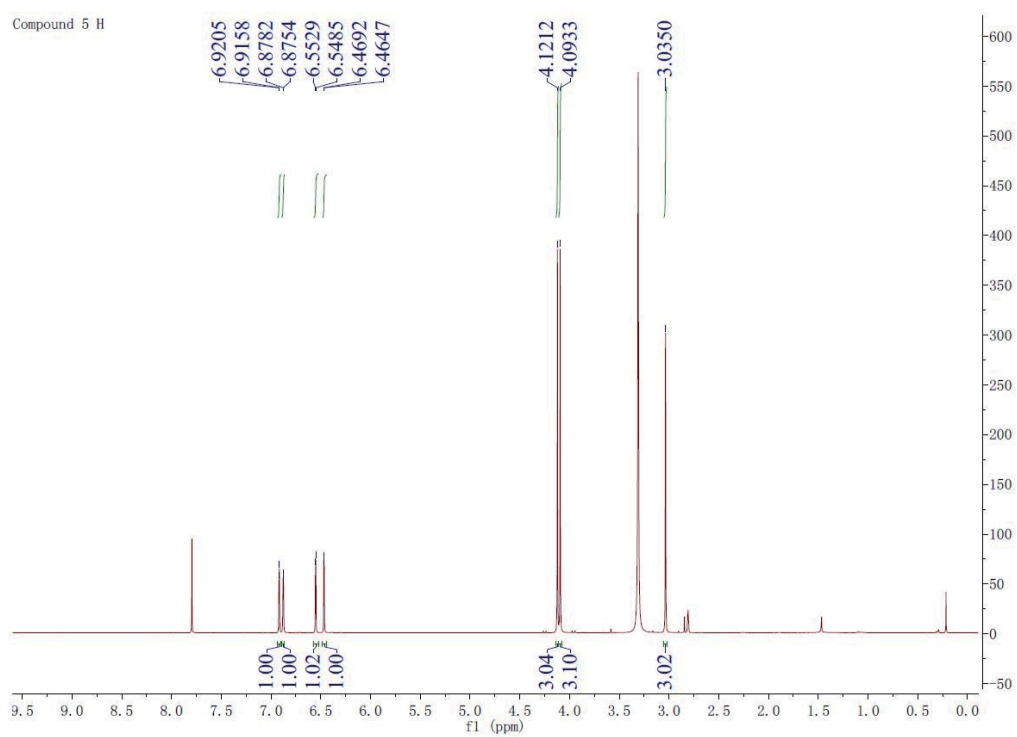


Figure S21. ^{13}C -NMR spectrum of compound **5** ($\text{CH}_3\text{Cl}-d_3$).

