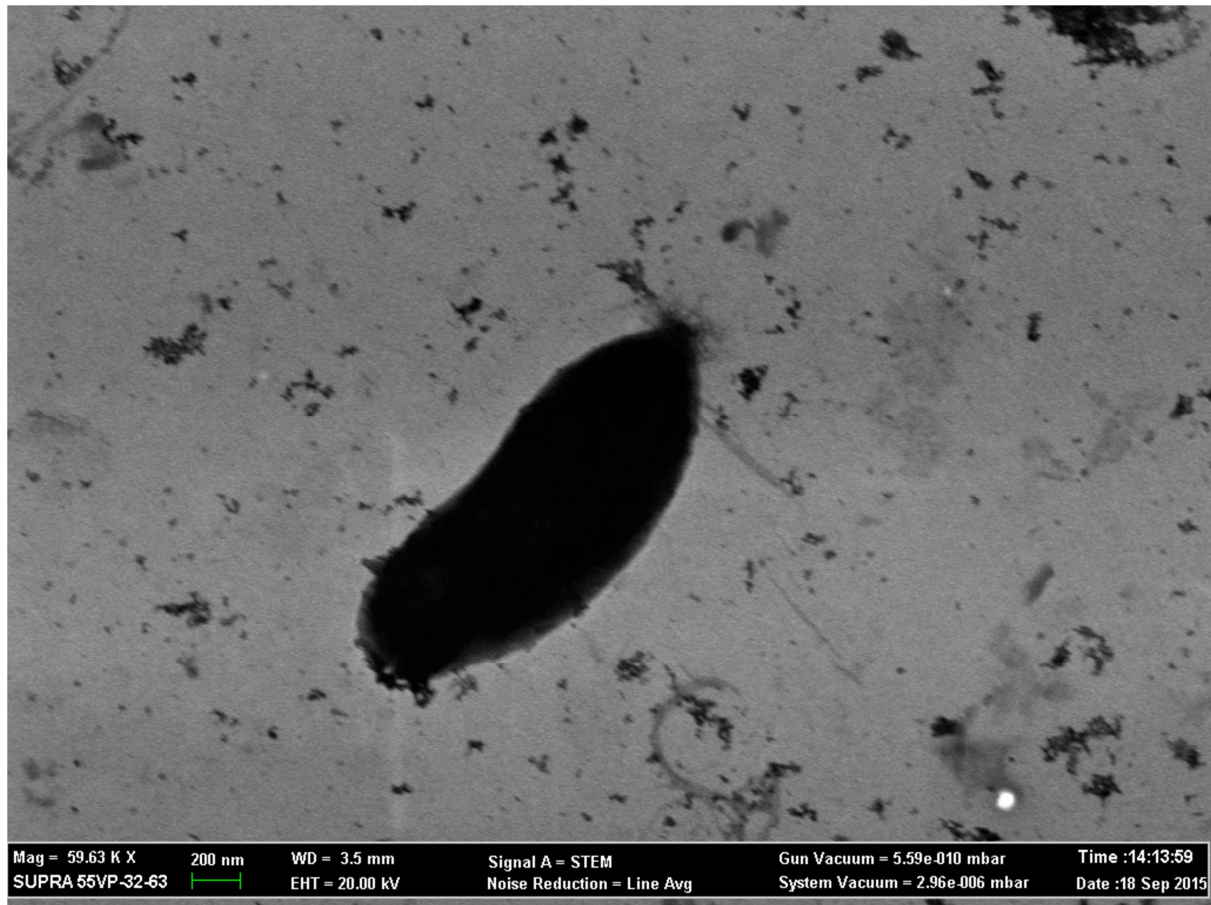
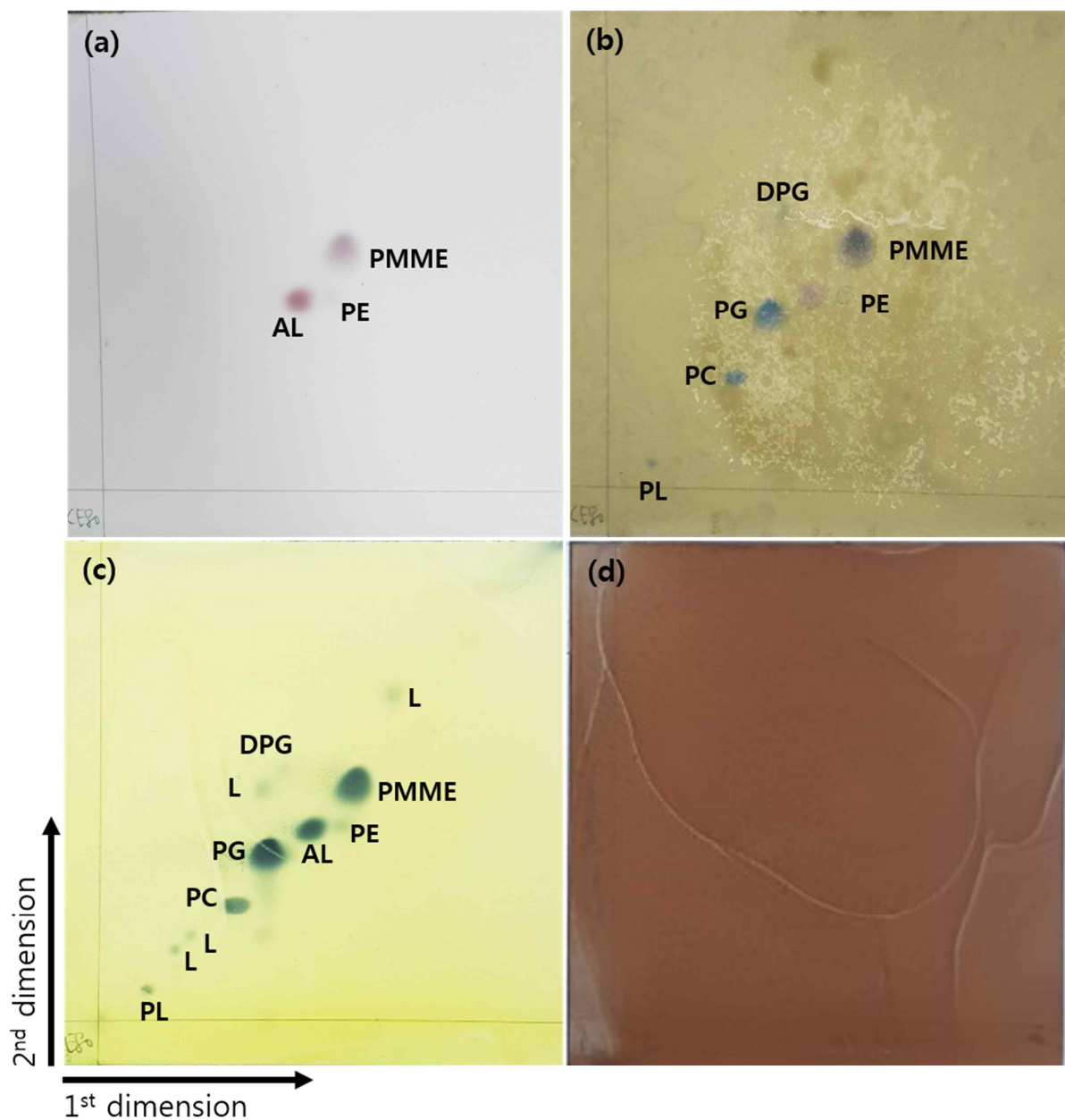


**Supplementary Fig. S1.** Transmission electron micrograph of cells of strain CE80<sup>T</sup>.



**Supplementary Fig. S2.** Polar lipid profiles of strain CE80<sup>T</sup> were detected with a), ninhydrin reagent; b), zinzadze reagent; c) molybdophosphoric acid reagent; d),  $\alpha$ -naphthol reagent. Two-dimensional TLC plate patterns of the total polar lipids of 1, strain CE80<sup>T</sup>; 2, *L. suaedae* KACC 13772<sup>T</sup>; 3, *L. marina* KCTC 12288<sup>T</sup>. DPG, Diphosphatidylglycerol; PC, phosphatidylcholine; PE, phosphatidylethanolamine; PG, phosphatidylglycerol; PMME, phosphatidylmono-methylethanolamin; AL, unknown aminolipids; PL, unknown phospholipid; L, unknown lipids.



**Supplementary Fig. S3.** Two-dimensional TLC plate patterns of the total polar lipids of strain CE80<sup>T</sup> and related species. (a), CE80<sup>T</sup>; (b), *L. suaedae* KACC 13772<sup>T</sup>; (c), *L. marina* KCTC 12288<sup>T</sup>. DPG, Diphosphatidylglycerol; PC, phosphatidylcholine; PE, phosphatidylethanolamine; PG, phosphatidylglycerol; PMME, phosphatidylmonomethylethanolamin; SQDG, sulphoquinovosyldiacylglyceride; AL, unknown aminolipids; PL, unknown phospholipid; L, unknown lipids.

