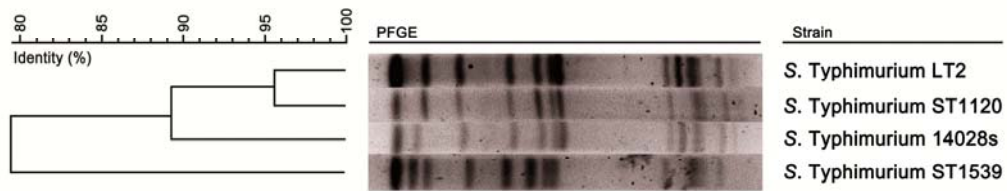


Fig. S1. PAGE analysis of *S. Typhimurium* ST1539



Genomes of four *S. Typhimurium* strains (LT2, 14028s, ST1120, and ST1539) were digested with XbaI and analyzed using PAGE. PAGE patterns were compared and depicted using identity (%).

Table S1. Disk diffusion test of *S. Typhimurium* ST1539

Antibiotic	Inhibition (mm)		Interpretive standard		
	ST1539	ST1120	Resistant (R)	Intermediate (I)	Susceptible (S)
AMP	21 ± 0.46 (S)	16 ± 0.15 (I)	≤ 13	14-16	17 ≤
CEP	21 ± 0.56 (S)	17 ± 0.15 (I)	≤ 14	15-17	18 ≤
GEN	25 ± 0.49 (S)	12 ± 0.30 (R)	≤ 12	13-14	15 ≤
KAN	29 ± 0.82 (S)	16 ± 0.16 (I)	≤ 13	14-17	18 ≤
NAL	19 ± 0.17 (S)	16 ± 0.20 (I)	≤ 13	14-18	19 ≤
NEO	24 ± 0.62 (S)	13 ± 0.04 (I)	≤ 12	13-16	17 ≤
TET	20 ± 0.91 (S)	16 ± 0.04 (S)	≤ 11	12-14	15 ≤
AMC	24 ± 0.26 (S)	20 ± 0.44 (S)	≤ 13	14-17	18 ≤
SAM	22 ± 0.81 (S)	18 ± 0.93 (S)	≤ 11	12-14	15 ≤
SXT	25 ± 1.07 (S)	25 ± 0.65 (S)	≤ 10	11-15	16 ≤

AMP, ampicillin; CEP, cephalothin; GEN, gentamicin; KAN, kanamycin; NAL, naladixic acid; NEO, neomycin; TET, tetracycline; AMC, amoxicillin/clavulanic acid; SAM, ampicillin/sulbactam; SXT, sulfamethoxazole/trimethoprim