

Table S1. Correlation coefficients among different soil parameters studied in the Thar Desert (India).

	pH	EC	OC	TN	TP	Cl	S	K	Ca	Mg	A-N	N-N
pH	1											
EC	0.359469	1										
OC	0.545054	0.260921	1									
TN	0.003674	0.387758	-0.4912	1								
TP	0.078803	0.692648	-0.24593	0.761094	1							
Cl	0.637944	0.566079	0.614681	0.09454	0.332258	1						
S	-0.43519	-0.14145	-0.37852	0.515678	0.387982	-0.46523	1					
K	0.632695	0.210373	0.458609	-0.02268	-0.05001	0.55553	-0.4135	1				
Ca	0.359563	-0.10957	0.395028	-0.15544	-0.30357	-0.07529	0.12445	-0.25131	1			
Mg	0.672561	0.40941	0.75035	-0.08489	-0.09253	0.740317	-0.50464	0.848093	0.057381	1		
A-N	0.324798	0.241209	0.446231	-0.64422	-0.38087	0.292864	-0.87952	0.090021	0.121188	0.314355	1	
N-N	0.486062	0.024857	0.420564	0.243975	-0.13637	0.200263	0.183556	0.503762	0.512513	0.610551	-0.29704	1

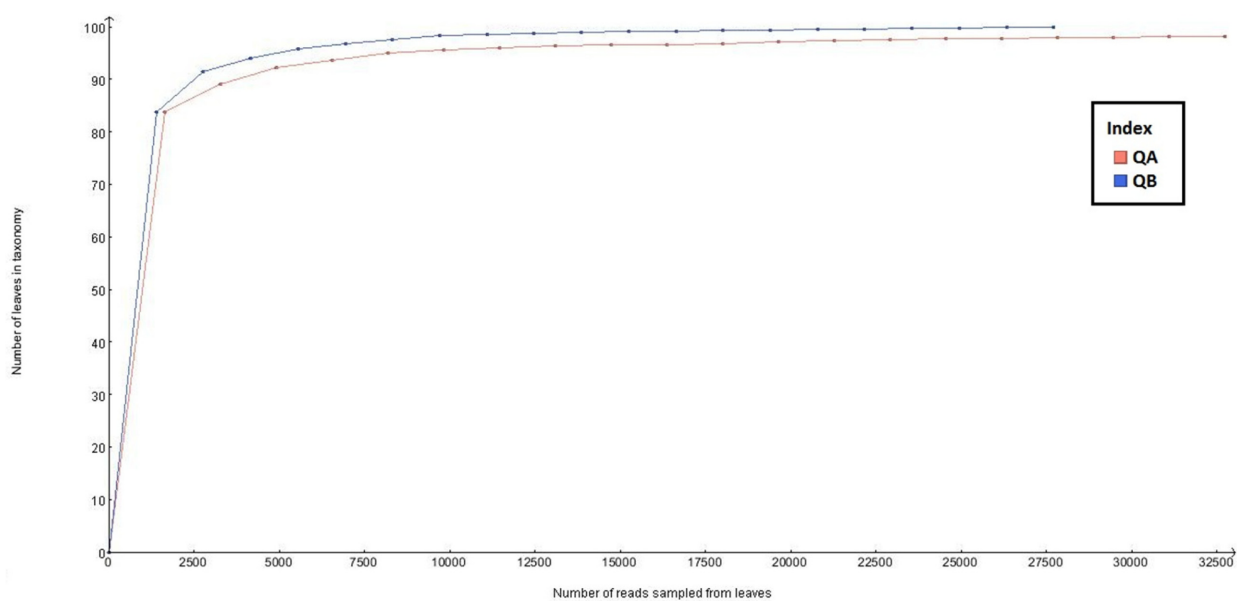


Fig. S1. Rarefaction curves of quadrates, Q-A and Q-B shows the coverage of the bacterial community in the present study.

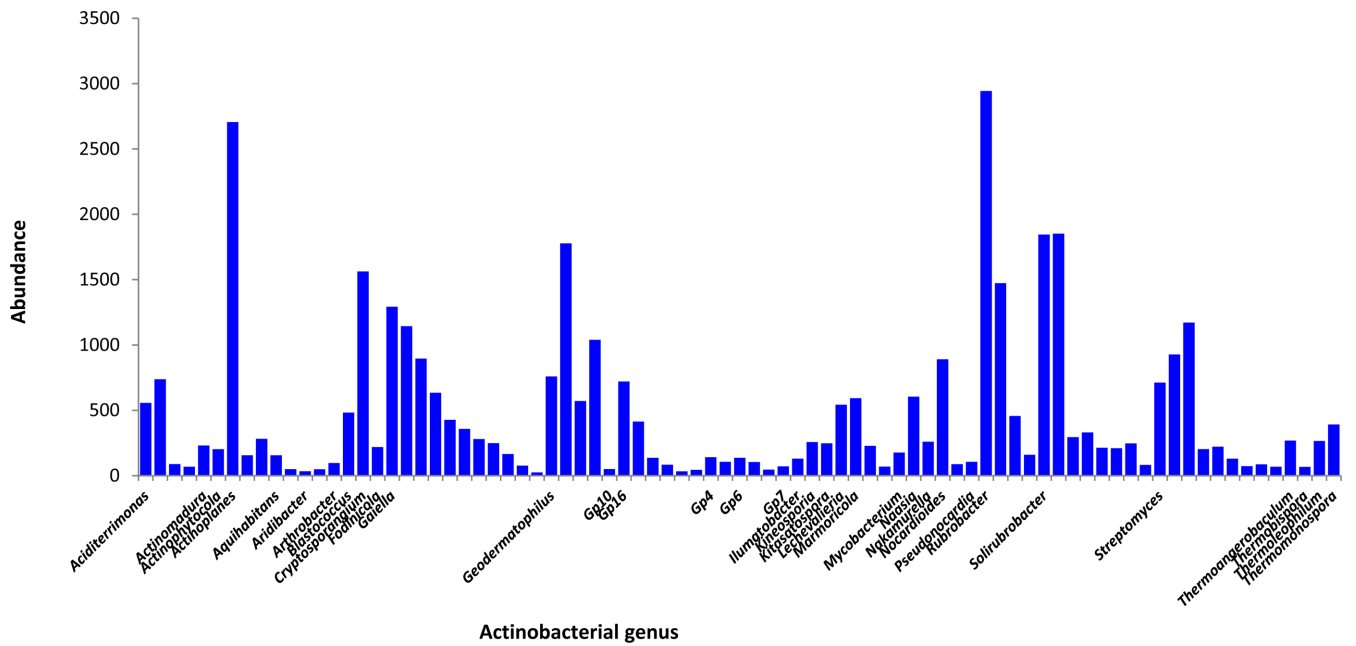


Fig. S2. Relative abundance of different genera affiliated to Actinobacteria.

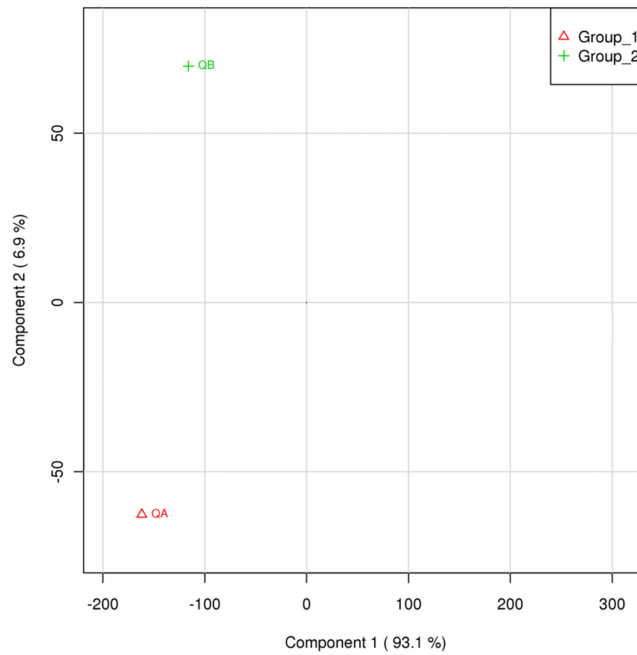


Fig. S3. PLS-DA plot of bacterial community associated with quadrates, Q-A and Q-B.

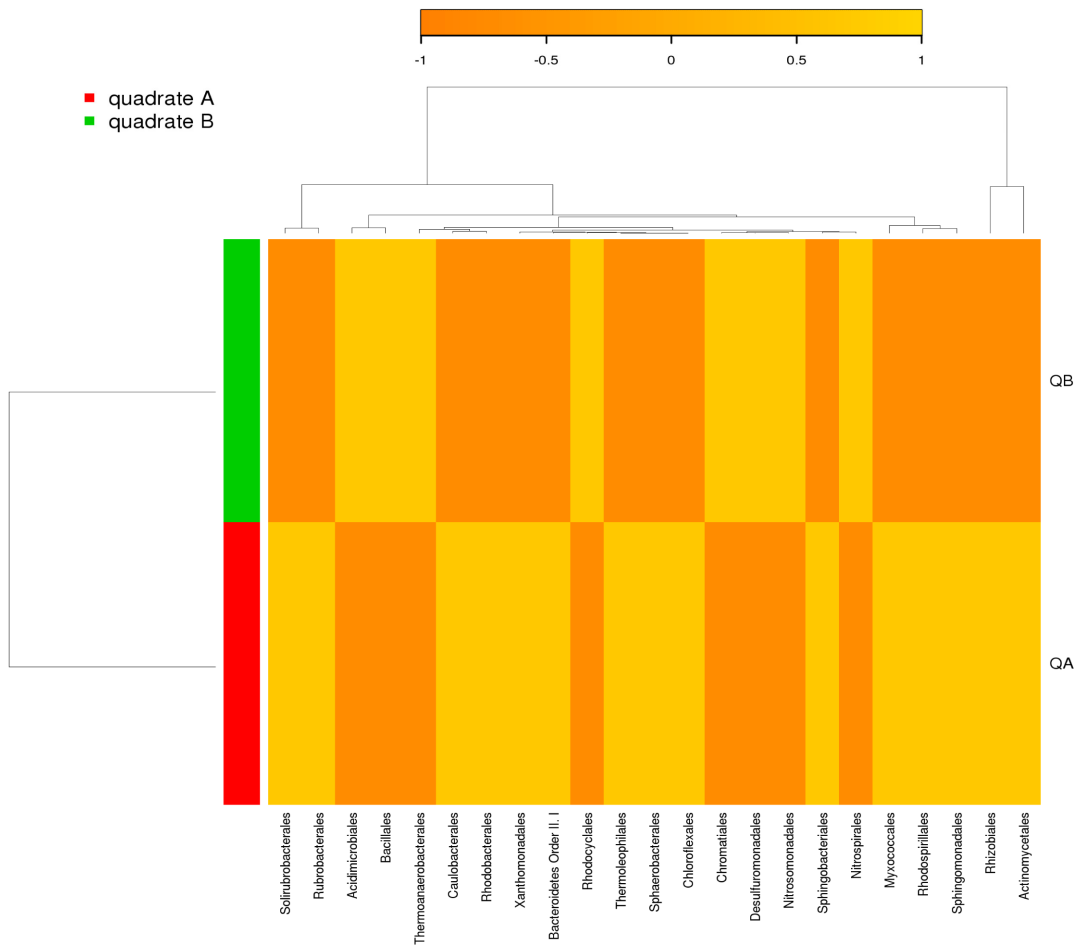


Fig. S4. Heat-map showing correlation between bacterial communities associated with quadrates, Q-A and Q-B.