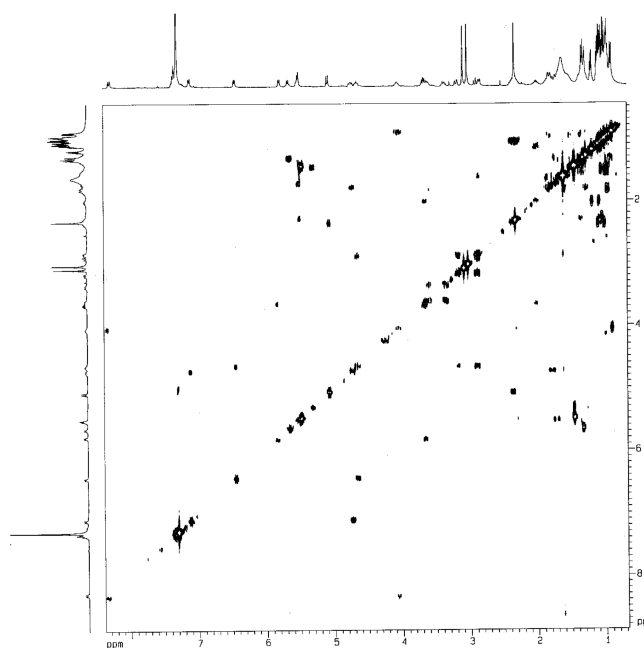
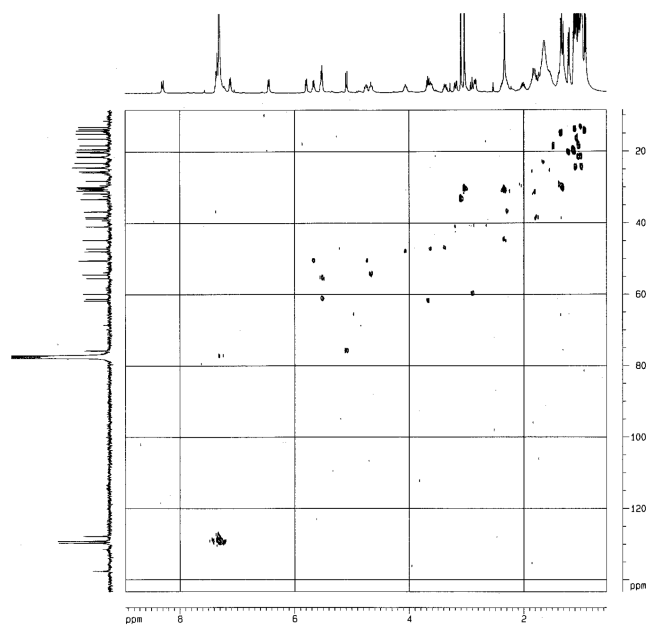


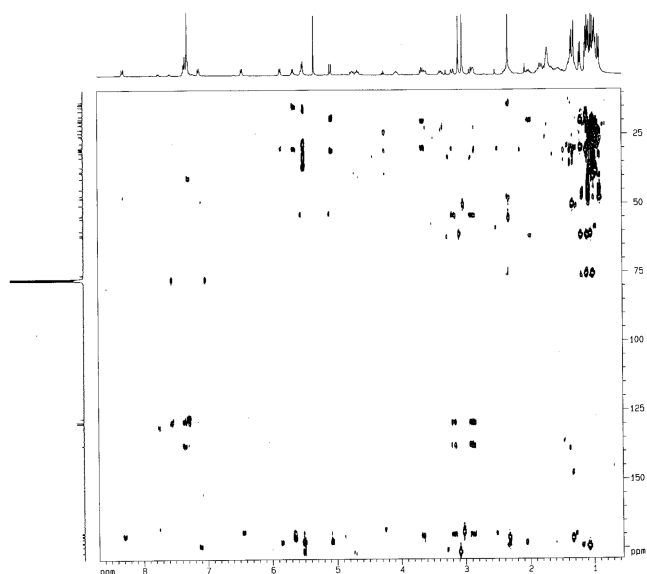
**Fig. S1.** <sup>1</sup>H and <sup>13</sup>C NMR spectra for wewakamide A (1) in CDCl<sub>3</sub>.



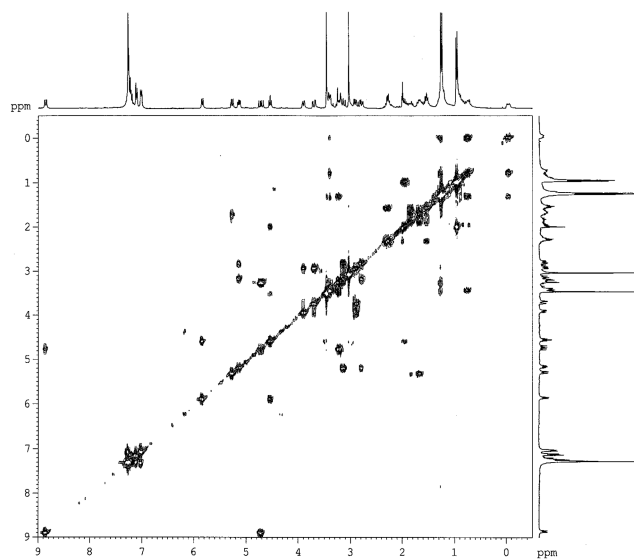
**Fig. S2.** <sup>1</sup>H-<sup>1</sup>H COSY plot for wewakamide A(1) in CDCl<sub>3</sub>.



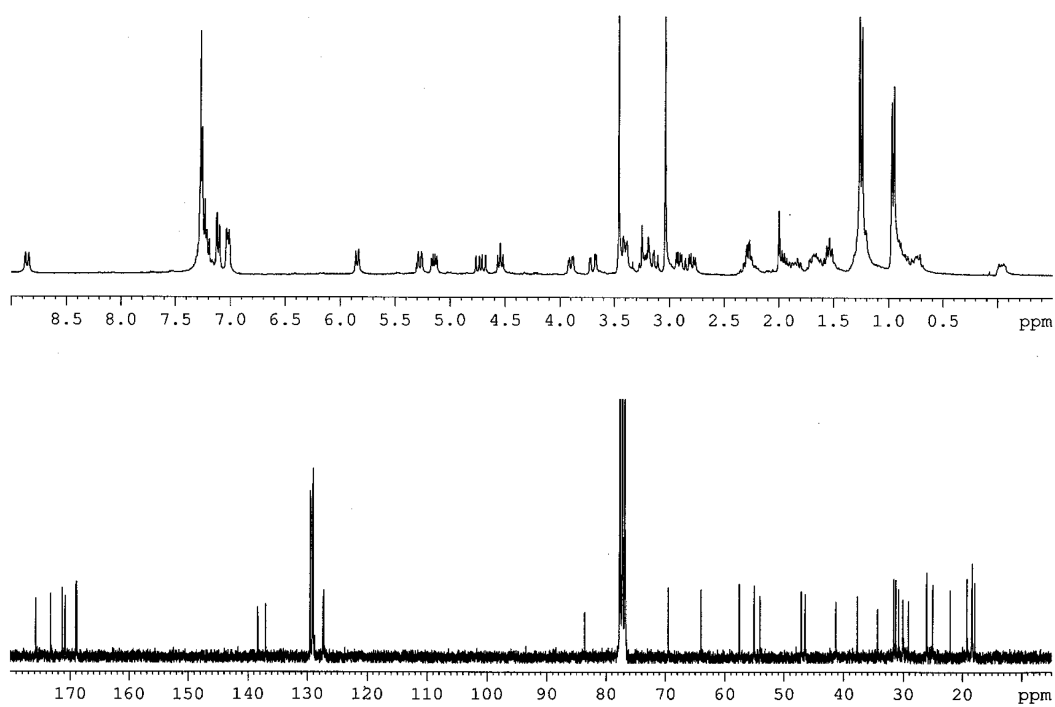
**Fig. S3.** HSQC plot for wewakamide A (1) in CDCl<sub>3</sub>.



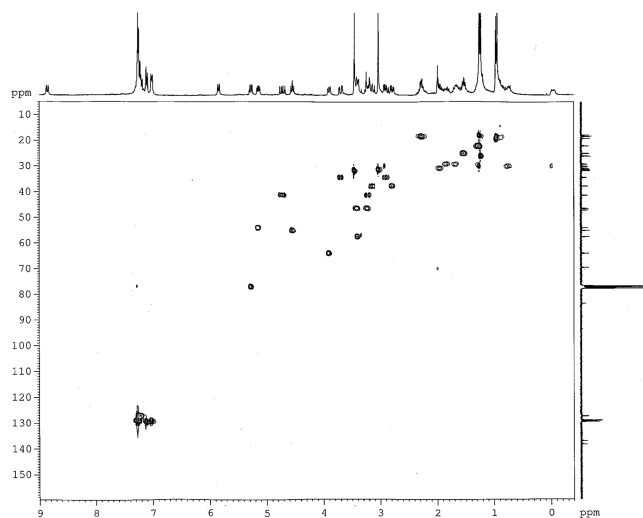
**Fig. S4.** HMBC plot for wewakamide A (**1**) in  $\text{CDCl}_3$ .



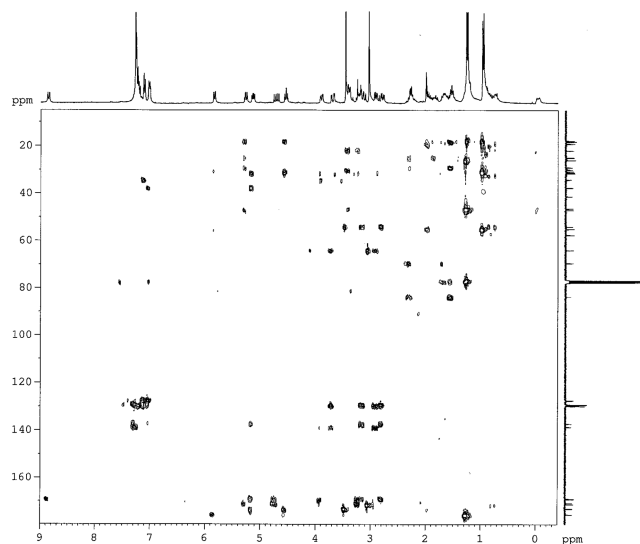
**Fig. S6.**  $^1\text{H}$ - $^1\text{H}$  COSY plot for guineamide G (**2**) in  $\text{CDCl}_3$ .



**Fig. S5.**  $^1\text{H}$  and  $^{13}\text{C}$  NMR spectra for guineamide G (**2**) in  $\text{CDCl}_3$ .



**Fig. S7.** HSQC plot for guineamide G (2) in  $\text{CDCl}_3$ .



**Fig. S8.** HMBC plot for guineamide G (2) in  $\text{CDCl}_3$ .